

Building Shared Print Collections: Insights from the Big Ten Academic Alliance

Acquisitions Institute at Timberline Lodge

Karla Strieb

May 20, 2025

2:35-3:20

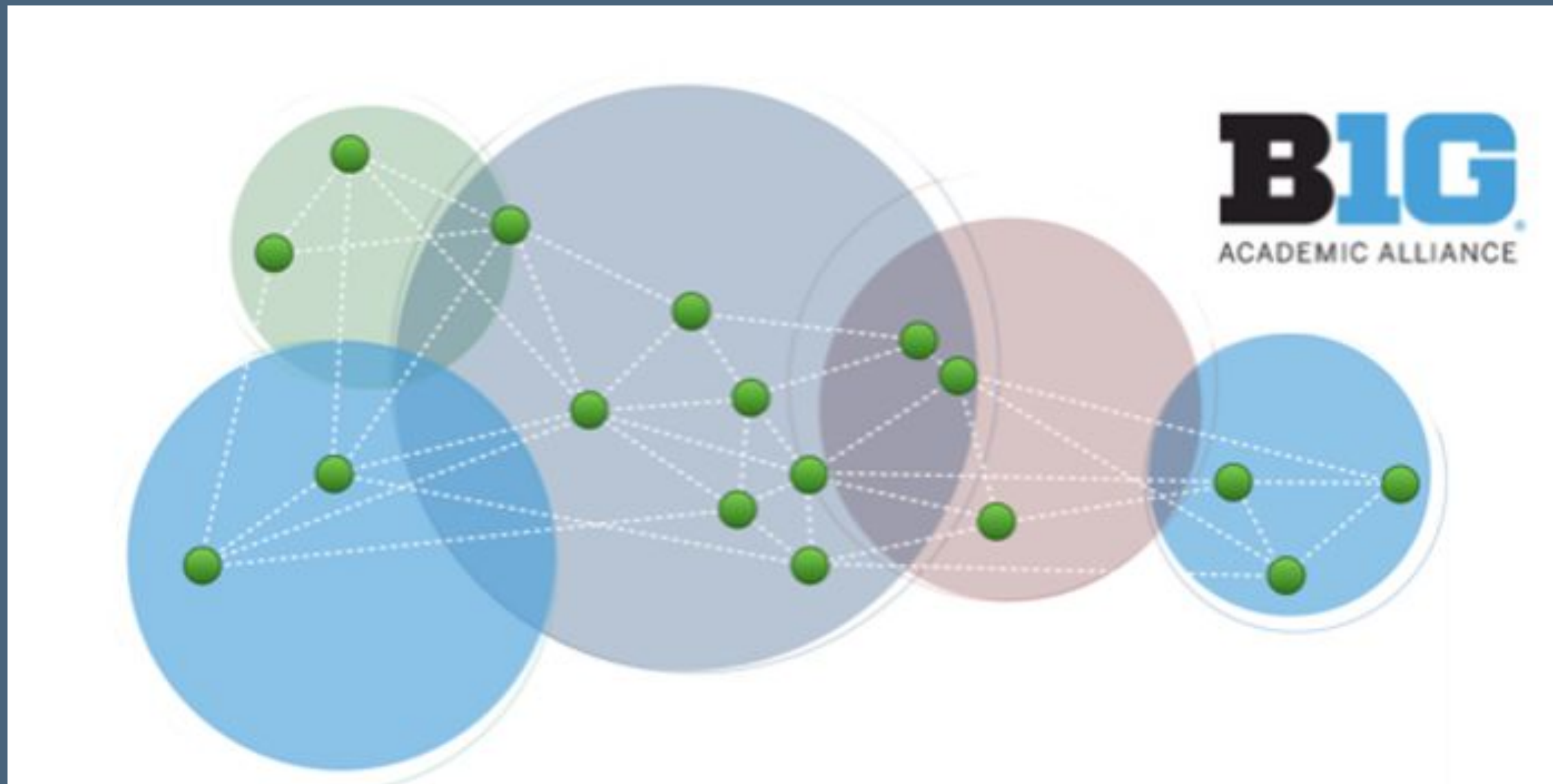




The Positionality of the Big Ten Academic Alliance



The Power of Community: Collective Action



STRATEGIC VISION

Unite our separate collections into **one collection**,
shared and fully networked

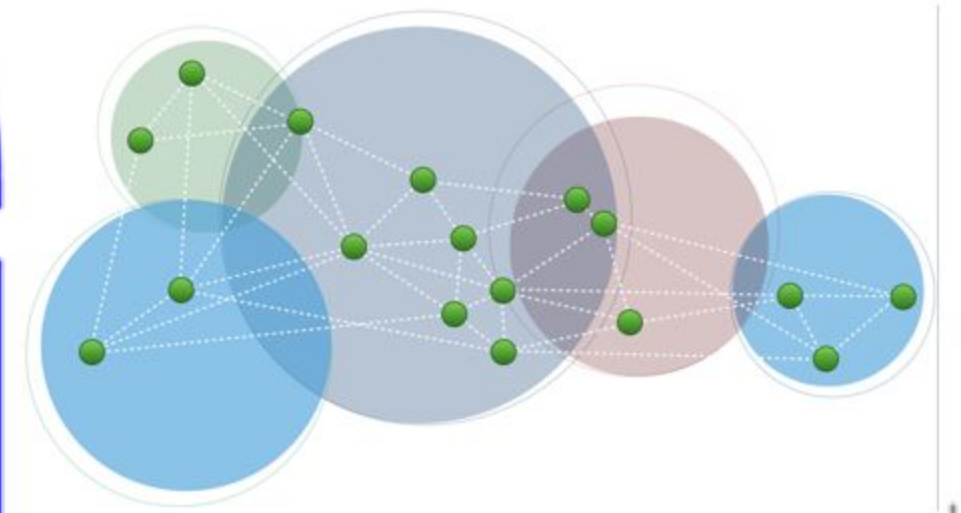
LESS A "DESTINATION"
THAN A WAY OF BEING —
A WAY OF OPERATING
WITH INCREASING
INTERDEPENDENCE



resources
people
services
expertise
technology
infrastructure

THE

BIG



COLLECTION

BUILDING A KNOWLEDGE COMMONS
FOR THE BIG TEN ACADEMIC ALLIANCE

North Star for the Libraries

In order to advance a **just, trustworthy, scalable & sustainable open knowledge ecosystem**,
make **open, more equitable scholarship** our lead purpose

University of Illinois
Indiana University
University of Iowa
University of Maryland
University of Michigan
Michigan State University
University of Minnesota
University of Nebraska
Northwestern University
University of Oregon

LIBRARIES
OF THE
BIG
ACADEMIC ALLIANCE

Ohio State University
Pennsylvania State University
Purdue University
Rutgers University
UCLA
University of Southern California
University of Washington
University of Wisconsin
University of Chicago

**A Shared Print
Collection:**

**Distributed and
Collectively Stewarded**



How it will matter to the members

WHAT IT WILL LOOK LIKE TO FACULTY AND STUDENTS



access to vastly more content and resources
than their local library collection

“everyone is local no matter which library they use”:
users have the same experience using materials no
matter which library they borrow from

new digital services, built collectively,
that add new value to print content:
magnified findability, accessibility, & usability

Paradigm Shift

Professional communities operate within and rely on shared conceptions of how the world works from the perspective of their professional focus. These are paradigms. Paradigms are the "source of coherence" - "a strong network of commitments – conceptual, theoretical, instrumental, and methodological..."

“Paradigm” refers to conceptions and understandings held by groups (not individuals) of adherents. It includes puzzles and problems which adherents work to address.

Thomas Kuhn in "The Structure of Scientific Revolutions."

Paradigm Shift = a new lens

A revolution unseats and replaces knowledge and beliefs that operate as the level of assumptions; the sort of "everybody knows that" kind of thing. In a new paradigm, what "everybody knows" becomes something different. Evidence, knowledge, methods, etc. are reframed.

What has shifted our paradigm for print collections?

Some contributors to that revolution

- The rise of mass digitization and HathiTrust,
- the conception of the collective collection and collective print retention programs,
- The growing practice collective action and joint investment
- the development of linked data and the related concepts of reusable metadata,
- the experience of pandemic-driven loss of access to the collective print collection of the community.

Paradigm Shift Exercise

Paradigm Shift Exercise: Step 1

Work by yourself

Create your personal FROM/TO table

7 minutes

Thought prompts:

- How is the technology world different?
- How are sources of library content different?
- How do our users engage with long form information differently?
- What do users want their use experience to be like?

Paradigm Shift Exercise: Step 2

With the person next to you

Share your tables with each other and build insights together

7 minutes

Paradigm Shift Exercise: Wrap-up

Take this sheet with you and use it to capture ideas as they come to you.

As you go about your work, try to notice where an old paradigm is influencing a process, priority, or decision.

Presentation: Part 2

What it looks like

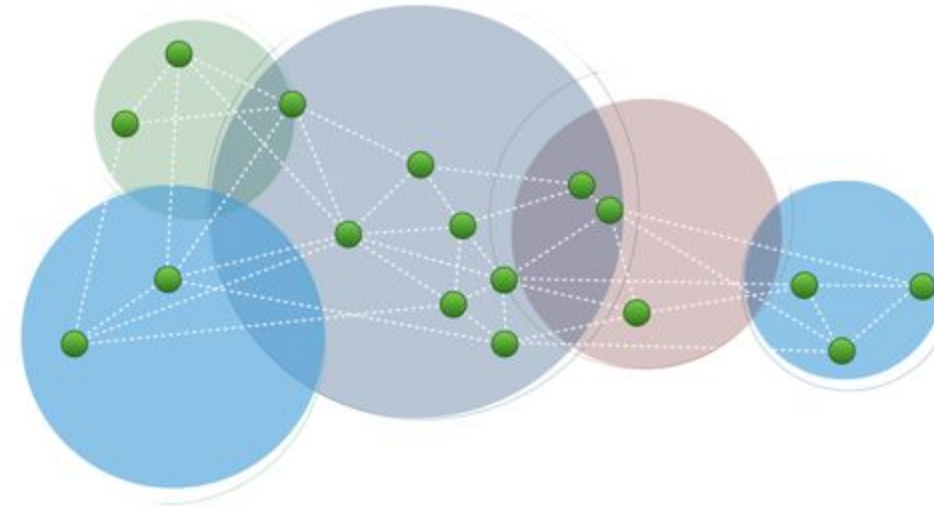
PREVIOUS PARADIGM

Separate collections, separate ownership,
each library “builds and buys” their own
and shares with others



CURRENT STATE

First ever look across the member library
collections for them to see their own
collections in context of the whole



IN THE NEW PARADIGM...

A single “pool of knowledge resources”
across the Big Ten, both print and digital

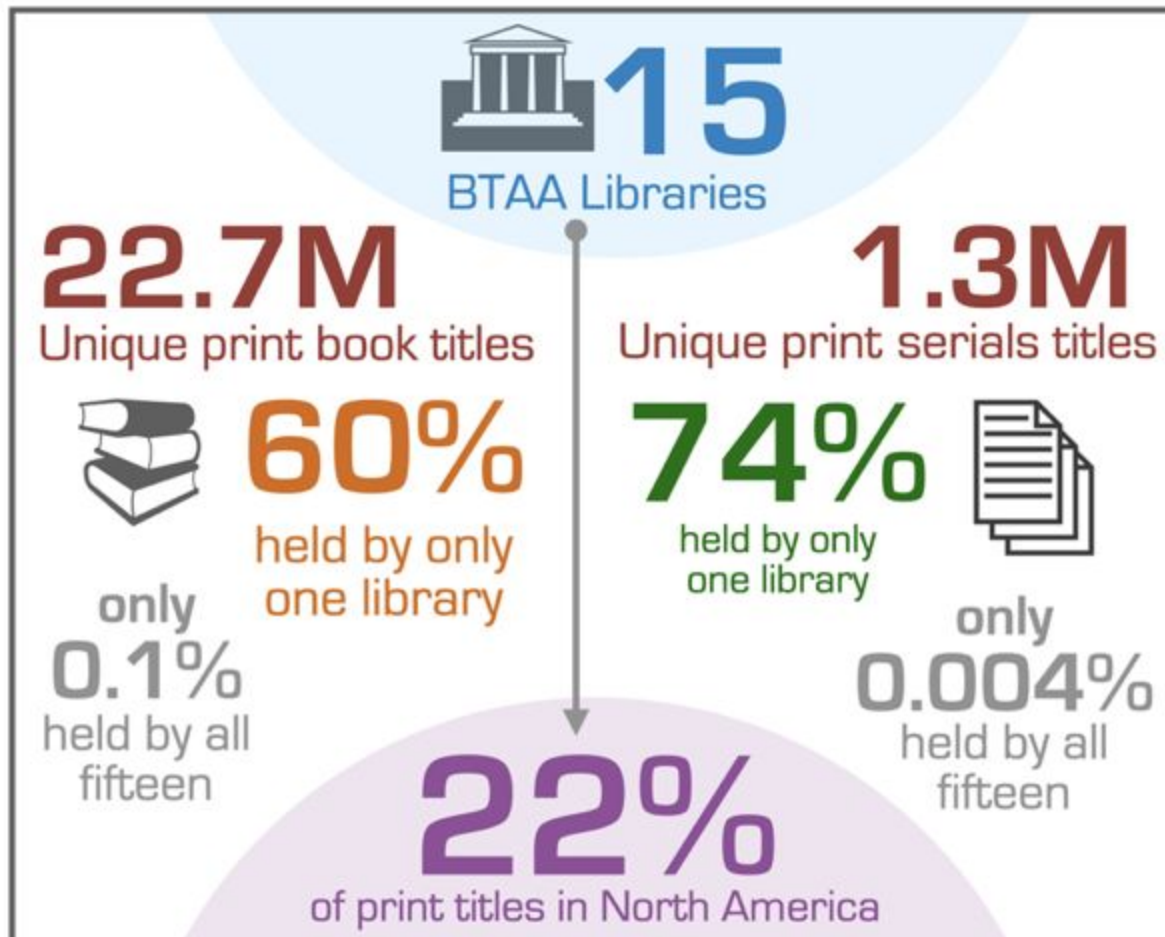
Every member of the community has
equitable, rapid access to the pool

The pool itself is jointly managed and
maintained by all members,
for the benefit of all of our universities

DESIRED FUTURE

Across the BTAA:
one collection,
fully networked,
jointly stewarded

new
systems
at scale

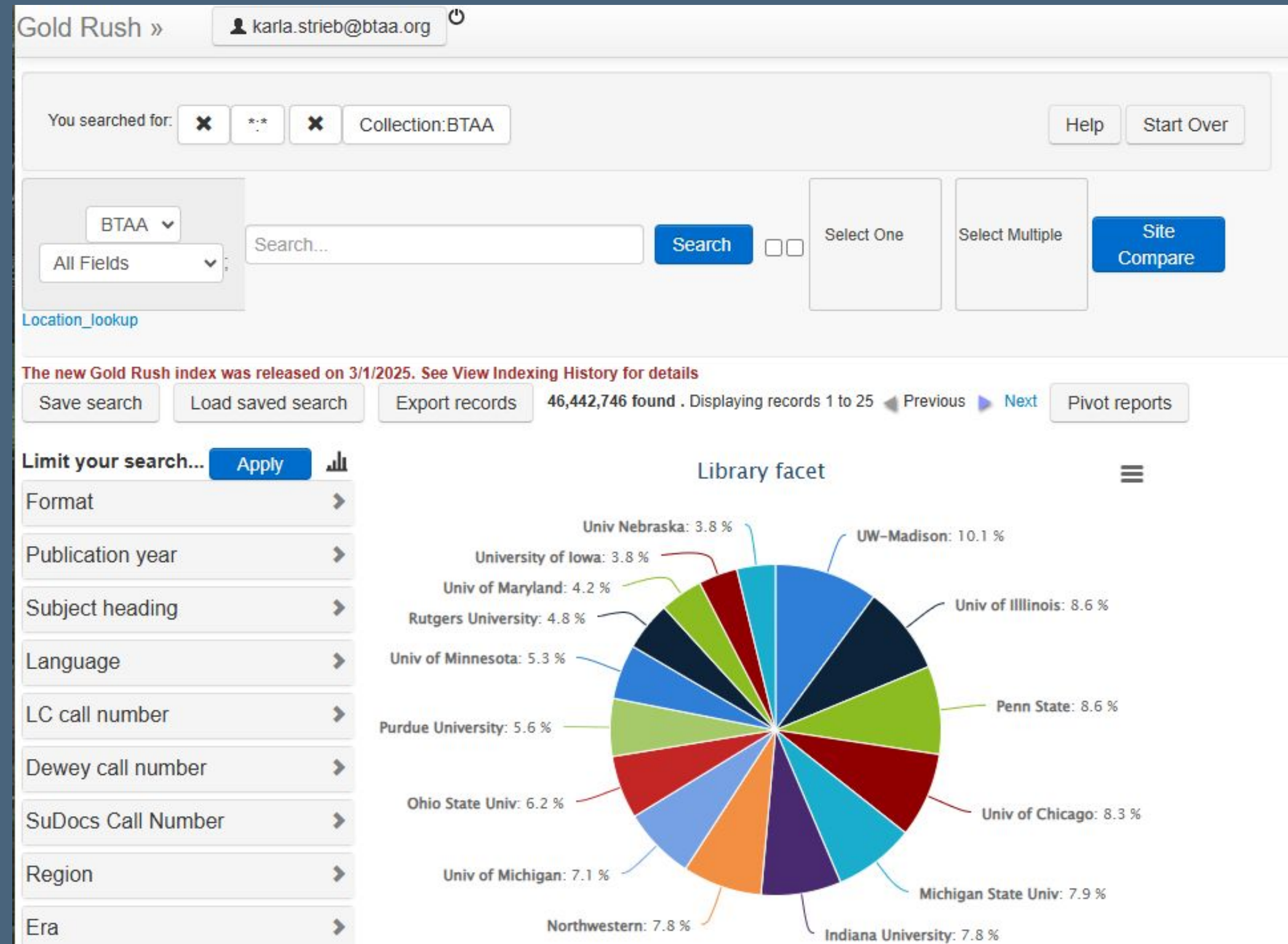


BIG CAT

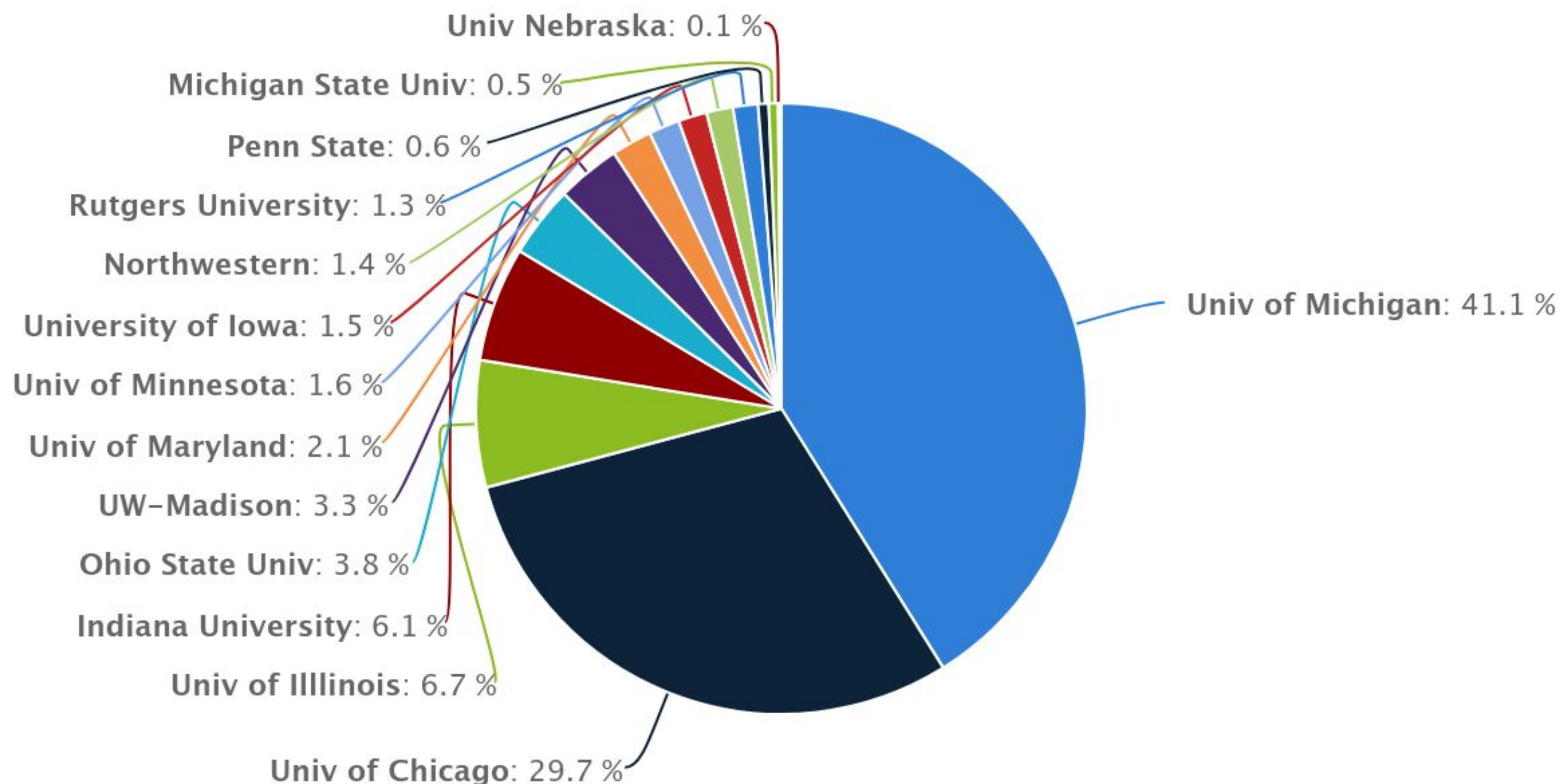
(shared catalog of library holdings)

Launched
Sept 2023

- 100 Million + records pre-expansion
- Member libraries update their metadata regularly
- Technology is contracted from the Colorado Alliance of Research Libraries
- We work together to improve the tool



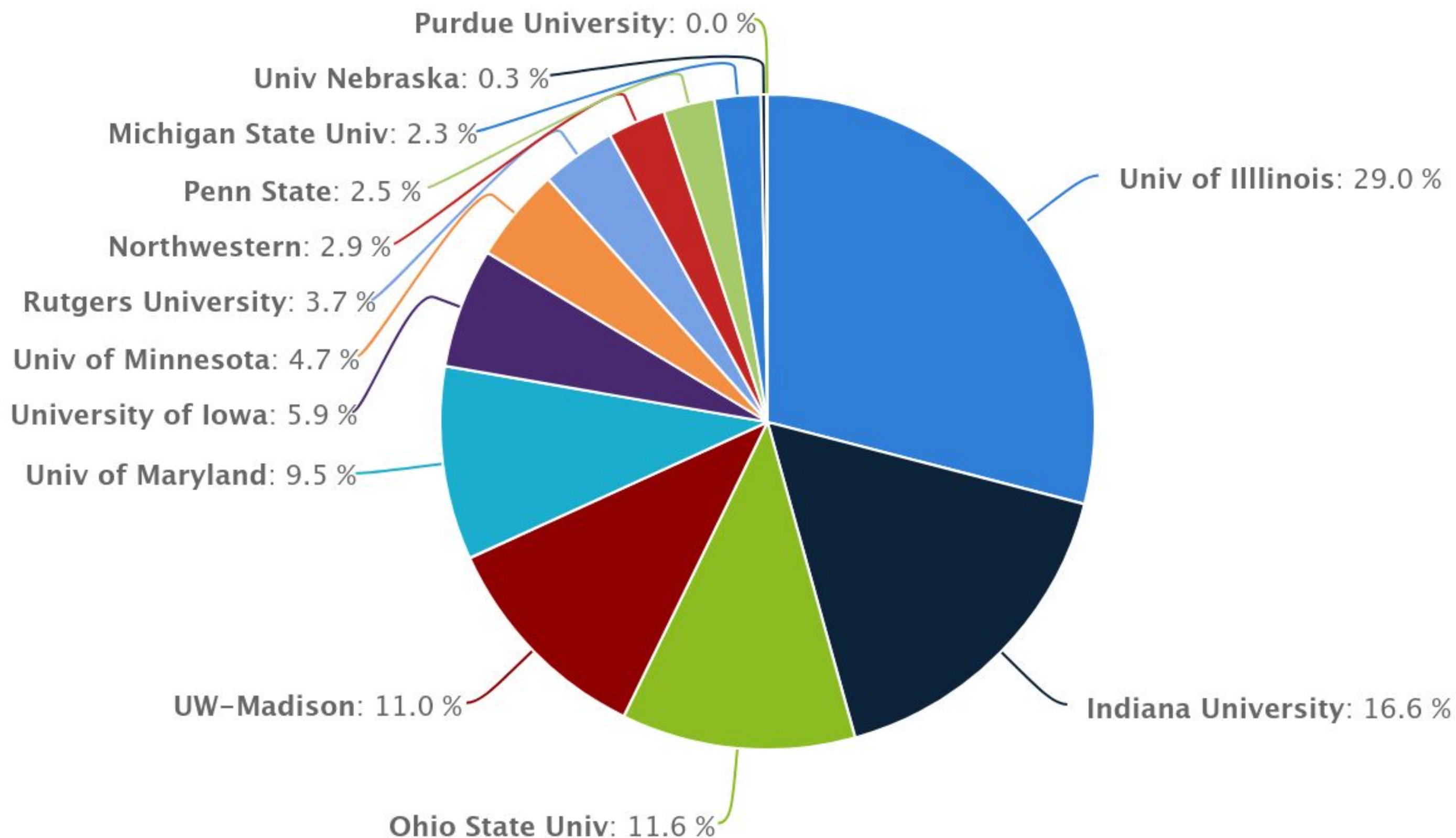
Books Published in Korea



**141,803 Records
in BIG CAT**

**1994-present
Includes
overlaps**

Books Published in Korea



**Omitting
Michigan and
Chicago**

**21,096 Unique
Bib Records in
BIG CAT**

**1994-present
Uniquely held**

CHANGING THE QUESTION

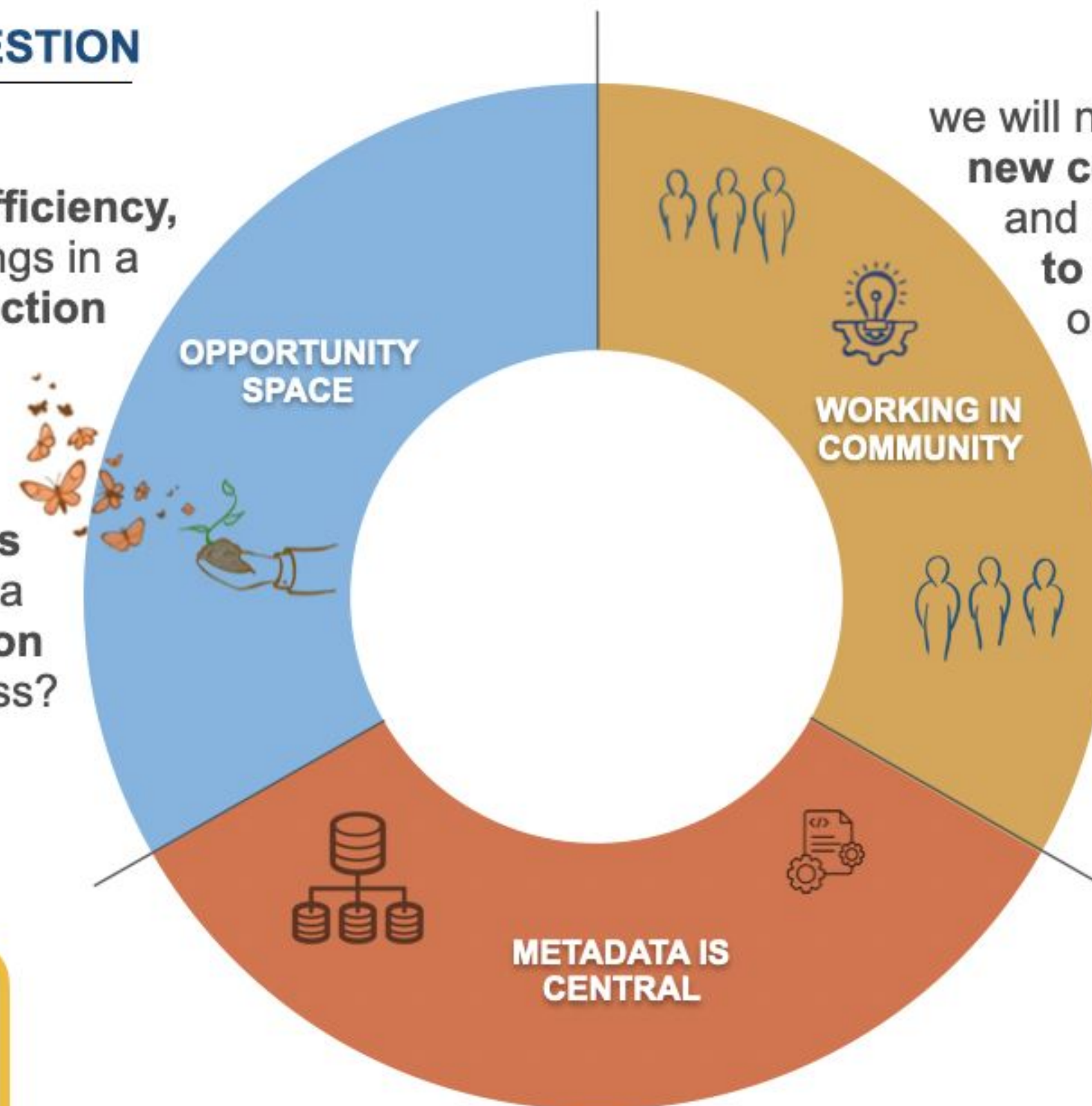
from

how to best realize efficiency,
de-duplication, & cost savings in a
co-managed general collection

to

how to broaden access
as far as possible to a
distinctive research collection
with high levels of uniqueness?

**Collective
Learning**

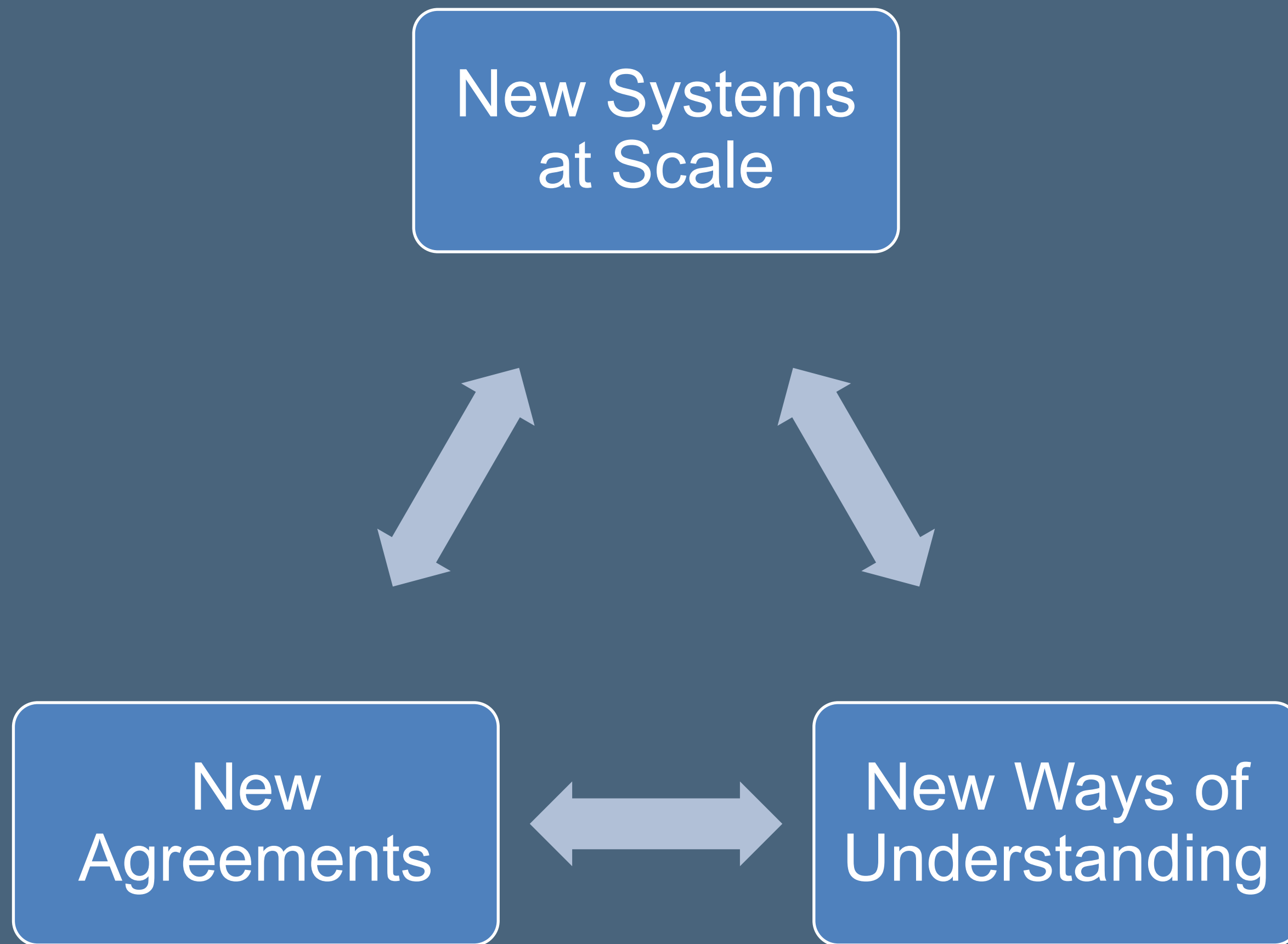


we will need
new communities
and **new structures**
to organize and manage
our **collective work**

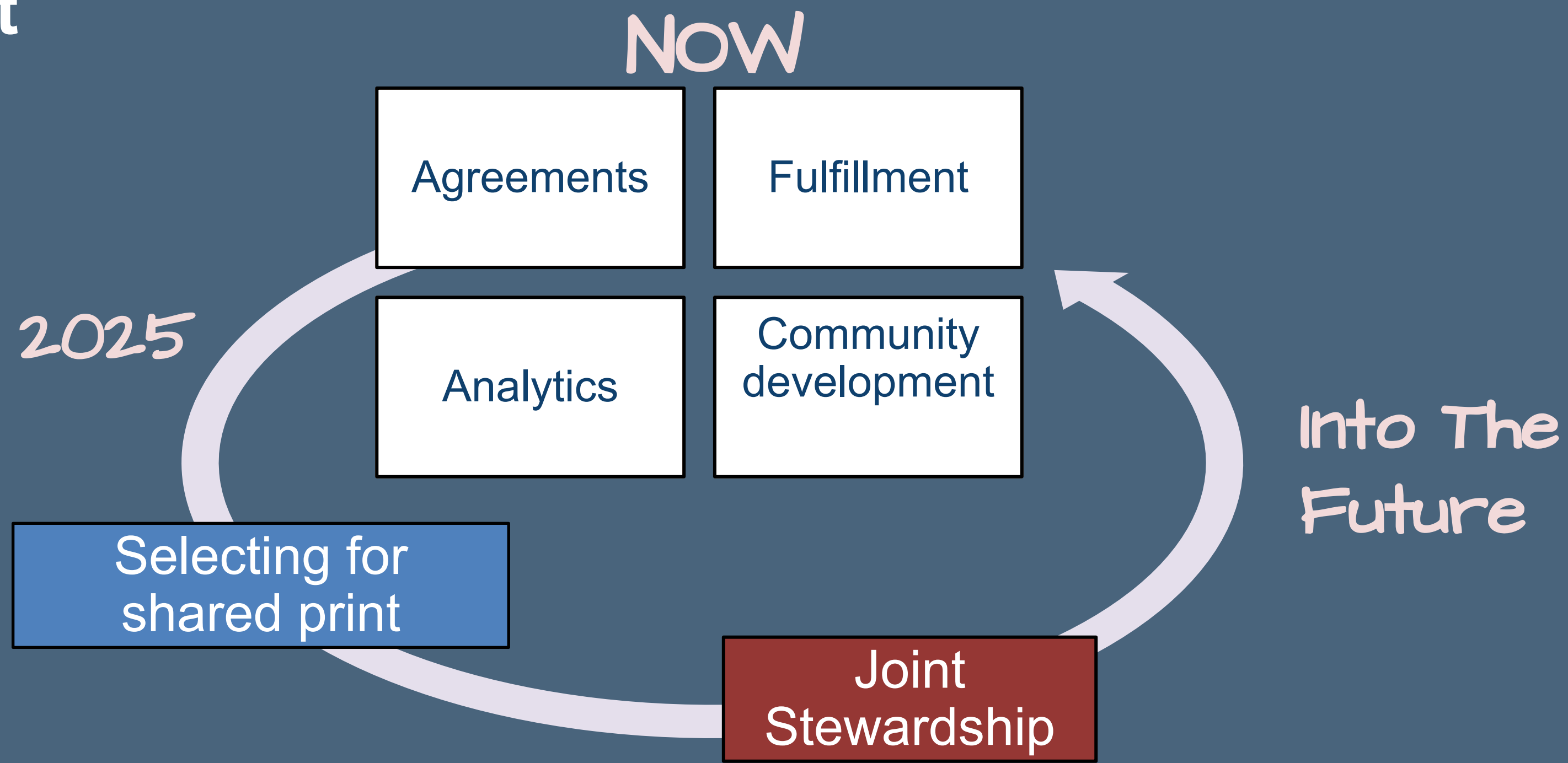
realignment is
complex and multi-focal

deep integration and
intentional interdependence
means **collective work**
becomes **deeply embedded**
in local practice

seeing our **metadata at scale**
enables us to **perceive limitations,**
relationships, and new opportunities



Building the Shared Print Collection



Shared Print Collection: Norms of collective investment



- All libraries participate and designate portions of local collections
- All libraries contribute to governance and share expertise
- Members work together to reduce gaps at the shared collection level
- All libraries align some local resources with the shared collection
- Every member works internally to maximize the value of the collective for all Big Ten users - changing workflows and resource allocations as needed

A Shared Print Collection that is a starting line for collective action:

- A shared context for targeted work
- Analytics capacity scope and assess collective action
- Baseline commitments to description + fulfillment + persistence create a starting point
- Ongoing community management allows shared decision making and organized resource allocation
- Goal: enhanced user experiences for all



Only all of us know enough

“Never doubt that a small group of committed citizens can change the world. Indeed, it is the only thing that ever has.”

—Margaret Mead

Public Backgrounder White Paper

<https://btaa.org/docs/default-source/library/final-shared-print-collection-white-paper.pdf>



Building the Future of Collective Stewardship: The Big Ten Shared Print Collection

Date: December 2, 2024

Author

Karla Strieb, Big Ten Academic Alliance, Visiting Program
Director for Shared Collection

Get In Touch!

To learn more about the Shared Print Program, visit our website:
<https://btaa.org/library/programs-and-services/shared-print-program>

To get more information on the program, contact:

Karla Strieb

Visiting Program Director for Shared Collections

Big Ten Academic Alliance Center for Library Programs

karla.strieb@btaa.org

